

# WAPA EN AVANT HANDBOOK



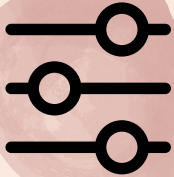
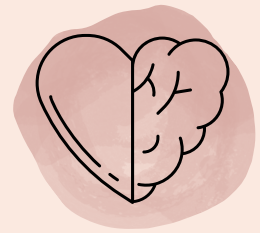
## CLASS ATTENDANCE

Attendance is the key to progress.  
Dancers need to attend every class possible.  
Dancer must be participating in all En Avant Program classes to participate in competitions.

---

## MISSED DAYS

Missing days for important homework, mental health and vacations is understandable. Too many missed days will impact participation in exams, competitions and shows. Faculty will contact families if too many are missed.



## LEVEL CHANGES

At times dancers will be held back from moving up levels. This is a hard thing to understand as a teen, but necessary for your dance abilities. Everyone has their own path to full potential. Each path looks different.

---

## CONVERSATIONS

There are many difficult feelings in dance training: corrections, favouritism, competitiveness, injuries. If you are struggling with certain feelings please take the time to talk with one of your teachers before or after class time.



## BALLET EXAM CANDIDATES

Teachers take great care in deciding who should take a ballet exam and when. If you need more information about why you weren't picked yet, don't hesitate to talk with your teacher.

# WAPA EN AVANT HANDBOOK



## COMPETITION REHEARSALS

Attendance is essential to keeping your place in a piece. Please arrive on time warmed up. If you miss more than 3 rehearsals you will be asked not participate in sections or the full piece.

---

## COMPETITION FEES

There are three sets of fees involved: Choreography/Rehearsal, Entry and Costumes. These fees will all happen in the fall. Each group ruffly totals \$600 and solos ruffly total \$650



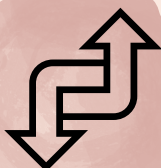
## COMPETITION START UP MEETING

The start up meeting is important for every dancer and parent to attend. We decide pieces, participation and dates. Everyone gets a vote. All families and dancers will need to sign the safe container agreement.

---

## COMPETITION SOLOS

Every En Avant dancer gets to choose a solo if they are doing both the ballet and modern group pieces. Solos are a great way to add performance time and individual attention. Solos are created in August.



## COMPETITION CHANGES

If you are not able to participate in competition any more, fees that have been applied can not be refunded. Fees are paid out by WAPA before they are charged to you.

# WAPA EN AVANT HANDBOOK

#BeKind

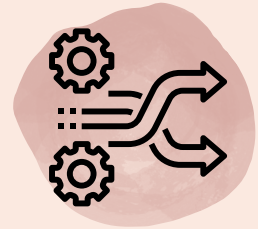
## COMPETITION EXPECTATIONS

When you are at competition you are humble and kind. You need to arrive at the time stated by WAPA and attend all performances. Consequences are discussed if the above is not demonstrated.

---

## WITHDRAWALS

If you need to withdraw we understand and can move you to other classes or scale back. Fees for that month will apply and a \$200 withdrawal fee applies if you are not longer dancing.



## HIGHEST LEVELS

Some dancers reach very high levels. If a dancer wants to take RAD Advanced 2 & Solo Seal or wants our help with auditions; you need to be taking the half day program.



## GRADE 12 EXPECTATIONS

Gr 12 students often wish to complete dance in a particular way. Please be sure you consider the progress and path you have made and have a talk with Dana.



## GRADE 12 THOUGHTS

Gr 12 is big year filled with lots of extra thoughts, decisions and emotions. Please be sure you are committing to the level of dance you will be able to accomplish. It is ok to scale back for a great year.

